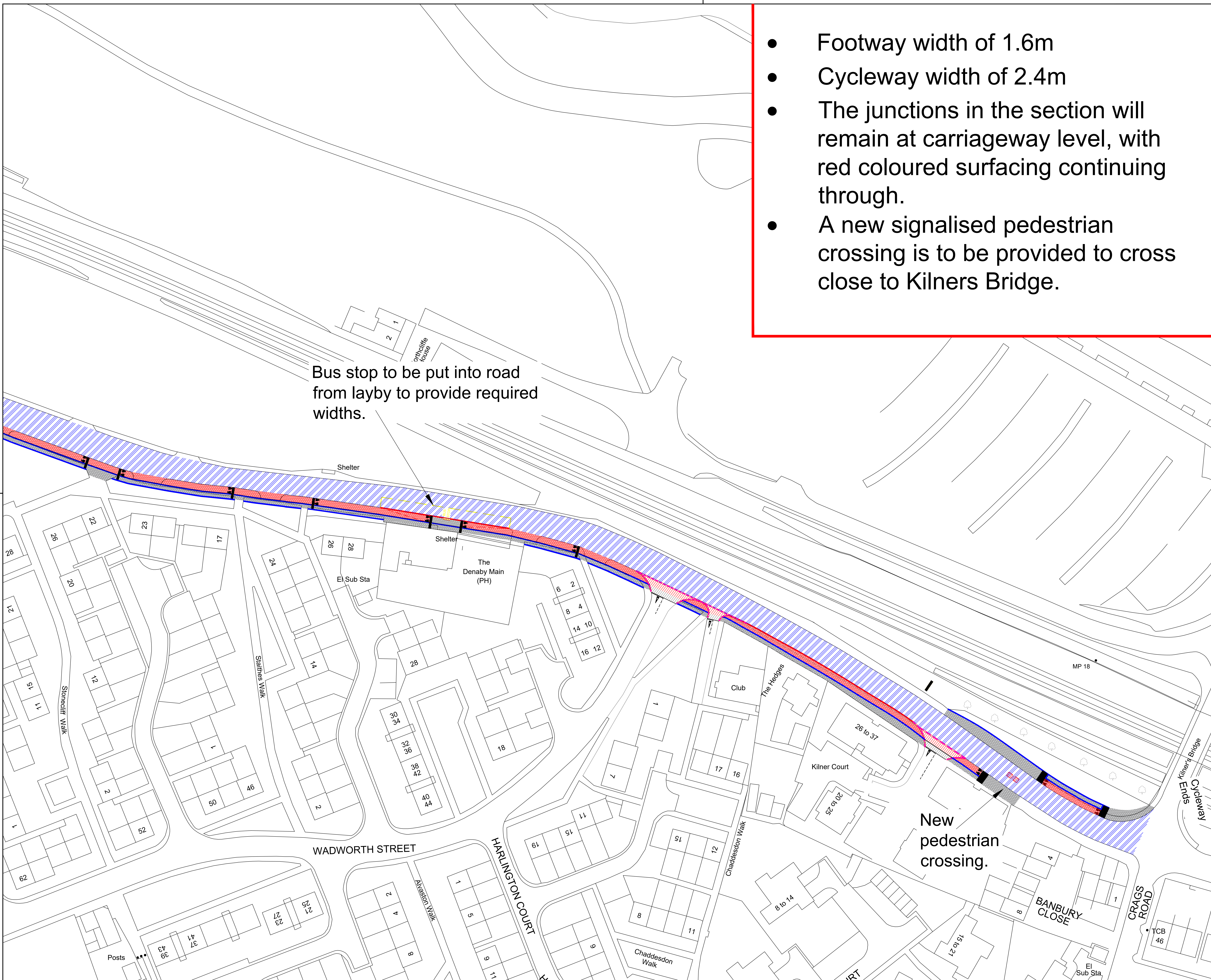


- Footway width of 1.6m
- Cycleway width of 2.4m
- The junctions in the section will remain at carriageway level, with red coloured surfacing continuing through.
- A new signalised pedestrian crossing is to be provided to cross close to Kilners Bridge.

Bus stop to be put into road from layby to provide required widths.

New pedestrian crossing.



This map is reproduced from Ordnance Survey material with the permission of Ordnance Survey on behalf of the Controller of Her Majesty's Stationery Office © Crown copyright. Unauthorised reproduction infringes Crown copyright and may lead to prosecution or civil proceedings. (100019782) (2011)

Rev	Revision Details	Rev by	Chk by	Date

**Doncaster**  
Metropolitan Borough Council  
**REGENERATION & ENVIRONMENT**  
DEVELOPMENT  
**MAJOR PROJECTS AND INVESTMENT**  
Civic Offices  
Waterdale  
Doncaster, DN1 3BU  
Assistant Director: Scott Cardwell

Project  
**Transforming Cities**

Drawing Title  
**Consultation Drawing 1**

Drawn by	Ryan Clark	e-mail	ryan.clark@doncaster.gov.uk
Approved by		Telephone	01302 734002
Date	June 2022	Fax	01302 735028
Scales	NTS	Drawing No.	29797-CON1
		Sheet	1 of 4
		Stage / Revision	-